

# Global Operations

Operate Globally with Confidence



Every organization in the world requires a unique approach to protecting its people and assets. iJET's Security Planning, Response, and Assistance services are tailored to match your organization's needs and specific global footprint.

## PROACTIVE PLANNING, SECURITY RESPONSE, AND ASSISTANCE

With iJET's 24x7 Hotline and Critical Monitor as the communication and support cornerstones, iJET helps you to prepare, monitor, and respond quickly to a variety of potential or realized threats in the most effective way possible. Our Response Operations Center proactively monitors threats 24 hours per day, 7 days per week, 365 days per year to help keep you ahead of the threat.

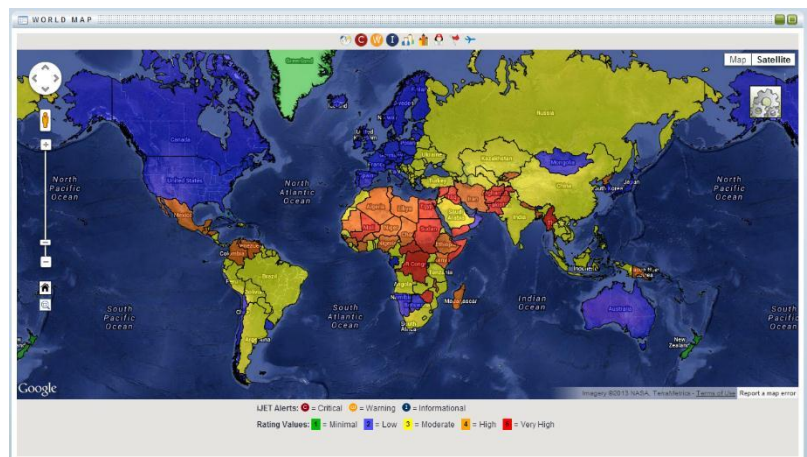
## Organizational Readiness

The best way to deal with an emergency is to have a well-exercised readiness plan. Many organizations find themselves less than prepared when chaos strikes. iJET's team of readiness experts will help your organization create or enhance your readiness plan to mitigate risk. Using industry best practices as they relate to your organization's unique preparedness needs, iJET can assist you with creating the best possible response.

- › Business continuity and disaster recovery planning
- › Assessments, training, drills, and exercises, (discussion-based or tabletop)
- › Incident management plans, protocols, and policies
- › Physical security audits
- › Security vulnerability assessments
- › Communications and response planning

## Worldcue® 24 Hotline

- › Dedicated global emergency hotline
- › Security and medical response support
- › Support from highly-trained response coordinators
- › Custom protocols tailored to your organization
- › Advice available for security issues
- › Mobile app with Quick Connect buttons
- › Option to reroute calls and signals to customer's security center



CSAR Map

## Organizational readiness and a clear plan for response are essential components for mitigating risks, protecting assets, and saving lives.

### Critical Monitor

When a critical threat or event impacts your assets, you not only need to know what's happening, you also need the best advice on what to do next. With a subscription to Critical Monitor, we monitor the world on your behalf and provide applicable advice, based on your specific global footprint. Unlike other one-size-fits-all programs, iJET tailors Worldcue® Critical Monitor to support your unique combination of country locations and employees. Services include proactive and continuous:

- ▶ Monitoring of Critical Alerts, 24/7/365 globally
- ▶ Evaluation of client exposure
- ▶ Assessment of client impact
- ▶ Provision of mitigation options
- ▶ Documentation and reporting
- ▶ Escalation in accordance with protocols

### Mobile App Communications

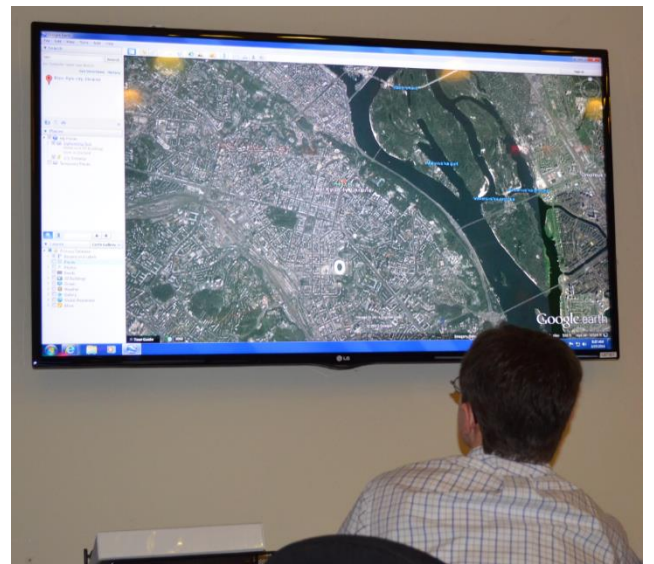
For added assurance, our Worldcue® Mobile TRAVELER App provides access to timely alerts on threats, important notices specific to your company, and destination intelligence. With the Quick Connect buttons, help is just a tap away, with optional **Hotline, Crisis Signal and Safety Check-In** features.



### Response Consulting Services

Our Global Ops consultants can help you build or advance your security programs, allowing you to prepare for, prevent, and manage crisis to minimize potential impacts to your organization. Our team of experts can assess your existing program and help tailor new response programs based on best practices.

A response program is only as good as the process and people behind it. Designed to ensure that your team is ready when needed, our hands-on approach to consulting services focuses on critical assessment, skills-building, and testing.



*Continuous monitoring and analysis*



Our mission is to be the industry leader, providing tailored solutions to help our clients operate globally with confidence. Each day, our insights protect the personnel, assets, and investments of those we serve.

**CONTACT US** for more information at [response@iJET.com](mailto:response@iJET.com).

